

LCD Digital Poster

Monitor Technical Specification

Product Name LCD32" Digital Poster - V32A1

Display Panel

Screen size: 32" (81cm) diagonal
 Resolution: 1366 x 768 pixels (16:9)
 Active area: 394.4 mm (W) x 698.8 mm (H) (Portrait)
 Brightness: 500 cd/m² (typical)
 Contrast ratio: 3000:1 (typical)
 Viewing Angle: H: 170° , V: 170°
 Colours: 16.77 Mil

Features

Media Format: JPEG, MP3
 Media Card: CF / SD
 Memory: 2 GB
 Import File: USB
 Audio: Integrated 2W, 8Ω speakers
 Default start mode: JPEG, MP3
 PC Connection: Not available

Controls

Video: Brightness, Contrast, Colour, Sharpness, Hue
 Colour Temperature (4 selections)
 Source selection
 Control Interfaces: Local Keyboard (OSD assisted)
 Infrared Remote Control (OSD assisted)
 RS232 Serial Port

Physical

Dimensions: 610 mm (W) x 914.4 mm (H) x 66 mm (D)
 Weight: 20.5 Kg (net)
 Mains Voltage 110/240 Vac ± 15%, 50/60 Hz
 Power : 190 W
 Operating Temp: 0°C to 40°C (max 75% RH not condensing)
 Storage Temp: -20°C to 60°C (max 75% RH not condensing)

User

Remote Control
 AC Power cable
 CD (User manual and software)
 Wall mount
 SD Memory Card

LCD 32" Digital Poster



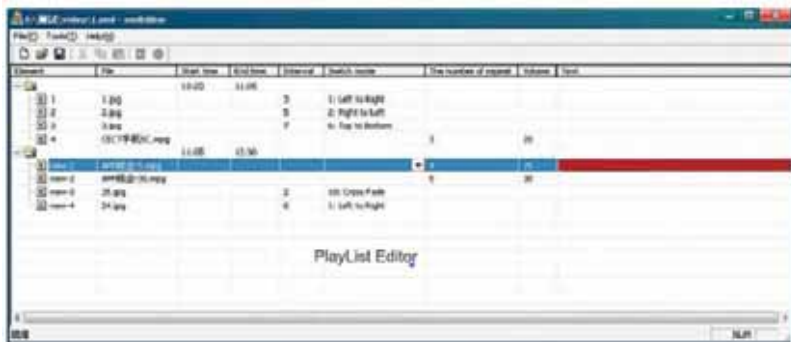
- Displays HD pictures in a loop
- Powerful play list editor and timer
- Programmable start and stop times
- Easy to copy files through USB port or memory cards
- JPG and MP3 files matched to create attractive sound effect
- Split screen feature enables display of message ticker

This new range of LCD displays is purpose built to operate as small Digital Posters. They are supplied with a wall mount for mounting in Portrait mode.

Each display includes an integrated media player that will accept CF or SD media cards or USB memory sticks.

If you have an application where a continuous display of images or text is required and where the data is only changed occasionally but with ease, then this is a very cost effective solution.

Simply insert a SD Memory Card and power on. The screen automatically starts playing the images, video and music that are loaded onto the card. You can set the play order and interval time of each slide and start and stop times, giving you complete control over every aspect of your digital presentation.



Edit play list:

In a play list, set up a group and add items into it. Set a start and a stop time for each group. Change the switch mode and interval time of JPG files, number of repeats and volume of MPEG files.

Set up a folder named "Loop" and copy the play list and all related JPG, MPEG and MP3 files into it. Insert the card into the display and it will display the files automatically

Hantarex have a policy of continuous development and reserve the right to change specifications and descriptions without prior notice. All trade marks acknowledged. LCD V32A1

Hantarex International Limited
Unit 14 – Forest Hill Business Centre
Forest Hill
London SE23 3JF

For further details e-mail: sales@hantarex.com
 Tel: +44(0)20 8778 1414 Fax: +44(0)20 8659 9348

www.hantarex.com